

CITY OF NAPOLEON GENERAL PERMIT APPLICATION

THIS APPLICATION IS FOR RESIDENTIAL CONSTRUCTION INCLUDING BUILDING, ELECTRICAL, PLUMBING, MECHANICAL & REMODELING

DATE 2/6/17 JOB LOCATION 744 W. Washington St Napoleon
 OWNER Daniel and Tahmy Hall TELEPHONE # 419-9166-2703
 OWNER ADDRESS 744 W. Washington St Napoleon
 CONTRACTOR Owners CELL PHONE # 419-9166-2703
 DESCRIPTION OF WORK TO BE PERFORMED Remove plaster walls, rewire, move bathroom sink, remove wall from bathroom into kitchen's pantry, move bathtub
 ESTIMATED COMPLETION DATE 7/2017 ESTIMATED COST 5000.00

P-17-0044
P-17-0045

Affected Floor Area (AFA): In existing structures, it is the area affected by the improvement, i.e. a new wall dividing a room (the AFA would be only the room and not all the rooms).

DESCRIPTION	FEE	TOTAL COST
BUILDING:		
Decks	\$25.00	\$
Addition & Alterations Square foot in (AFA) _____ x \$0.05 = \$ _____ +	\$25.00 =	\$ <u>25⁰⁰</u>
Garage and Shed over 200 SF (Detached)	\$25.00	\$
Siding and/or Roofing	\$25.00	\$
Windows/Doors	\$25.00	\$
ELECTRICAL:		
Electrical Circuits in (AFA) _____ x \$3.00/Circuit = \$ _____ +	\$25.00 =	\$ <u>25⁰⁰</u>
Electrical Service Upgrade	\$25.00	\$
MECHANICAL:		
Water Heater	\$25.00	\$
Furnace and/or AC Replacement	\$25.00	\$
PLUMBING:		
Plumbing Traps in (AFA) _____ x \$3.00/Trap = \$ _____ +	\$25.00 =	\$ <u>25⁰⁰</u>
TOTAL plus Ohio Board of Building Standards Fee 1%		\$ <u>50</u>

TOTAL FEE: \$ 50⁵⁰/₁₀₀

I FULLY UNDERSTAND THAT NO EXCAVATION, CONSTRUCTION OR STRUCTURAL ALTERATION, ELECTRICAL OR MECHANICAL INSTALLATION OR ALTERATION OF ANY BUILDING STRUCTURE, SIGN, OR PART THEREOF AND NO USE OF THE ABOVE SHALL BE UNDERTAKEN OR PERFORMED UNTIL THE PERMIT APPLIED FOR HEREIN HAS BEEN APPROVED AND ISSUED BY THE CITY OF NAPOLEON BUILDING/ZONING DEPARTMENT.

I hereby certify that I am the Owner of the named property, or that the proposed work is authorized by the Owner of record and that I have been authorized by the Owner to make this application as his/her authorized agent and I agree to conform to all applicable laws of the jurisdiction. In addition, if a permit for Work described in this application is issued, I certify that the code official or the code official's authorized representative shall have the authority to enter areas covered by such permit at any reasonable hour to enforce the provisions of the code(s) applicable to such permit.

I HEREBY ACKNOWLEDGE THAT I HAVE READ AND FULLY UNDERSTAND THE ABOVE LISTED INSTRUCTIONS.

SIGNATURE OF APPLICANT: [Signature] DATE: 2/6/17

PRINT NAME: Daniel Hall

PERMIT # _____ BATCH # 36110 CHECK # 7083 DATE 2/6/17

CLUsers\techman\Downloads\General Permit Application.doc

Building permit # P-17-0044
 Electrical permit # P-17-0045

MADE WITH A TRIAL COPY OF
SmartDraw

MADE WITH A TRIAL COPY OF
SmartDraw

MADE WITH A TRIAL COPY OF
SmartDraw

MADE WITH A TRIAL COPY OF
SmartDraw

MADE WITH A TRIAL COPY OF
SmartDraw

MADE WITH A TRIAL COPY OF
SmartDraw

MADE WITH A TRIAL COPY OF
SmartDraw

MADE WITH A TRIAL COPY OF
SmartDraw

MADE WITH A TRIAL COPY OF
SmartDraw

MADE WITH A TRIAL COPY OF
SmartDraw

MADE WITH A TRIAL COPY OF
SmartDraw

MADE WITH A TRIAL COPY OF
SmartDraw

MADE WITH A TRIAL COPY OF
SmartDraw

MADE WITH A TRIAL COPY OF
SmartDraw

MADE WITH A TRIAL COPY OF
SmartDraw

MADE WITH A TRIAL COPY OF
SmartDraw

MADE WITH A TRIAL COPY OF
SmartDraw

MADE WITH A TRIAL COPY OF
SmartDraw

MADE WITH A TRIAL COPY OF
SmartDraw

MADE WITH A TRIAL COPY OF
SmartDraw

MADE WITH A TRIAL COPY OF
SmartDraw

MADE WITH A TRIAL COPY OF
SmartDraw

MADE WITH A TRIAL COPY OF
SmartDraw

MADE WITH A TRIAL COPY OF
SmartDraw

MADE WITH A TRIAL COPY OF
SmartDraw

MADE WITH A TRIAL COPY OF
SmartDraw

MADE WITH A TRIAL COPY OF
SmartDraw

MADE WITH A TRIAL COPY OF
SmartDraw

MADE WITH A TRIAL COPY OF
SmartDraw

MADE WITH A TRIAL COPY OF
SmartDraw

MADE WITH A TRIAL COPY OF
SmartDraw

MADE WITH A TRIAL COPY OF
SmartDraw

MADE WITH A TRIAL COPY OF
SmartDraw

MADE WITH A TRIAL COPY OF
SmartDraw

MADE WITH A TRIAL COPY OF
SmartDraw

MADE WITH A TRIAL COPY OF
SmartDraw

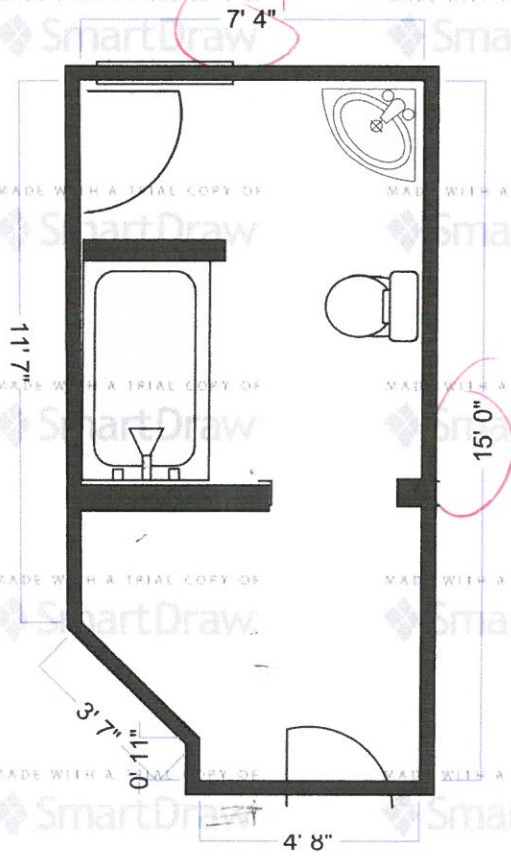
MADE WITH A TRIAL COPY OF
SmartDraw

MADE WITH A TRIAL COPY OF
SmartDraw

MADE WITH A TRIAL COPY OF
SmartDraw

MADE WITH A TRIAL COPY OF
SmartDraw

existing



MADE WITH A TRIAL COPY OF
SmartDraw

MADE WITH A TRIAL COPY OF
SmartDraw

MADE WITH A TRIAL COPY OF
SmartDraw

MADE WITH A TRIAL COPY OF
Smartl

MADE WITH A TRIAL COPY OF
SmartDraw

MADE WITH A TRIAL COPY OF
SmartDraw

MADE WITH A TRIAL COPY OF
SmartDraw

MADE WITH A TRIAL COPY OF
Smartl

New

MADE WITH A TRIAL COPY OF
SmartDraw

MADE WITH A TRIAL COPY OF
SmartDraw

MADE WITH A TRIAL COPY OF
SmartDraw

MADE WITH A TRIAL COPY OF
Smartl

MADE WITH A TRIAL COPY OF
SmartDraw

MADE WITH A TRIAL COPY OF
SmartDraw

MADE WITH A TRIAL COPY OF
SmartDraw

MADE WITH A TRIAL COPY OF
Smartl

MADE WITH A TRIAL COPY OF
SmartDraw

MADE WITH A TRIAL COPY OF
SmartDraw

MADE WITH A TRIAL COPY OF
SmartDraw

MADE WITH A TRIAL COPY OF
Smartl

MADE WITH A TRIAL COPY OF
SmartDraw

MADE WITH A TRIAL COPY OF
SmartDraw

MADE WITH A TRIAL COPY OF
SmartDraw

MADE WITH A TRIAL COPY OF
Smartl

MADE WITH A TRIAL COPY OF
SmartDraw

MADE WITH A TRIAL COPY OF
SmartDraw

MADE WITH A TRIAL COPY OF
SmartDraw

MADE WITH A TRIAL COPY OF
Smartl

MADE WITH A TRIAL COPY OF
SmartDraw

MADE WITH A TRIAL COPY OF
SmartDraw

MADE WITH A TRIAL COPY OF
SmartDraw

MADE WITH A TRIAL COPY OF
Smartl

MADE WITH A TRIAL COPY OF
SmartDraw

MADE WITH A TRIAL COPY OF
SmartDraw

MADE WITH A TRIAL COPY OF
SmartDraw

MADE WITH A TRIAL COPY OF
Smartl

MADE WITH A TRIAL COPY OF
SmartDraw

MADE WITH A TRIAL COPY OF
SmartDraw

MADE WITH A TRIAL COPY OF
SmartDraw

MADE WITH A TRIAL COPY OF
Smartl

